

AFC PRODUCT ID: CCS2000 HEAVY DUTY PANEL

Concrete Core Steel

Common Features

- Steel Top Sheet
- Die Formed Steel Bottom Pan
- Cement Fill
- Epoxy Powder Coat
- Non-Combustible

Panel Benefits

- Sound Insulation
- Accommodates heavy loads
- For use in any raised floor application.
- Meets required data center static dissipative properties

Standard Applications

- Green Buildings
- Mixed Use
- Casino
- Owner Occupied
- Show Rooms
- Data Centers
- Cleanrooms
- Office Buildings
- Computer Rooms
- Casinos
- Healthcare Facilities
- Theaters
- Media Centers
- Classrooms
- Training Facilities
- Libraries
- Courthouses
- Light Industrial

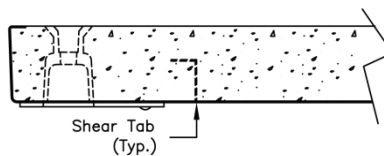
Product	AFC	Tate	Haworth	ASM
	CCS 2000	Concore 2000	TecCrete	FS400
System Weight	14.0 lbs/ft ²	11.5 lbs/ft ²	N/A	N/A
Ultimate Load	6000 lbs	N/A	N/A	6000 lbs
Concentrated Load 0.10" Deflection	2000 lbs	2000 lbs	N/A	2000 lbs
Impact Load	175 lbs	150 lbs	N/A	175 lbs
Rolling Load 10 Pass	1500 lbs	1500 lbs	N/A	1500 lbs
Rolling Load 10,000 Pass	1200 lbs	1200 lbs	N/A	1200 lbs
Uniform Loads	550 lbs/ft ²	550 lbs/ft ²	N/A	N/A



AFC - CCS Panel



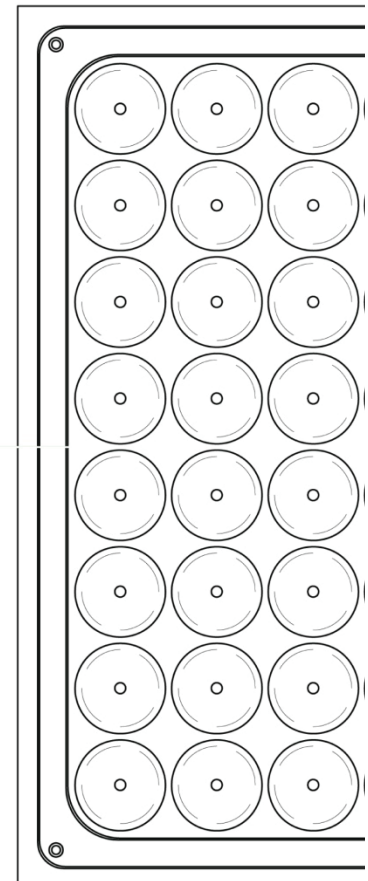
TATE - ConCore Panel



HAWORTH - Tec Crete Panel



ASM - FS Panel



PRODUCT COMPARISON CCS2000 HEAVY DUTY PANEL